

# Piecing it Together:

## A Pathway to Encourage Partnership Working

Dr Janice Brown  
University of Southampton

Partnership team: Lucy Sutton, National Policy Lead,  
NCPC Neurological Conditions Policy Group,  
UK MND Professional Network,  
Consultation participants,  
Pilot site participants.

# Why do we need a pathway?

- Neurological care is complex: many symptoms and disabilities across variable timeframes
- Patients may need consideration of early referral to palliative care and/or rehabilitation services
- Care for neurological illness spans many disciplines: neurology, rehabilitation, palliative care, social services and voluntary agencies
- Each contributing speciality has much expertise to offer
- Need to ensure services do not duplicate themselves but work together and provide coordinated care through the disease trajectory

# What is a pathway?

- A means to improve delivery of care to patients and families
- A multidisciplinary tool to detail essential steps and decisions in the care of patients with specific clinical problems
- A resource for promoting appropriate, timely referrals
- A resource to enhance partnership working, promote communication and encourage seamless transitions between services
- A template suitable for adaptation to local need

# Aims of the pathway

- To support continuing improvement in quality of care for people with palliative care needs from neurological conditions
- To enhance the interface (partnership working) between pivotal services: neurology, palliative care, rehabilitation, social care, voluntary agencies
- To use in-built triggers, questions to prompt consideration of palliative care across the patient journey

# Developing the Pathway

1. Review of the evidence
2. Consultation process
3. The pathway in practice: Pilot sites

# 1. Review of the evidence - examples

- Policy
  - NSF Long-term conditions
  - Continuing care assessment
- Guidelines
  - Gold Standards Framework
  - NICE guidelines
  - Liverpool care pathway
- Research
  - Plumb (2006)
  - Edmonds et al (2005)
  - Rossiter & Thompson (1995)

## 2. Consultation process

- National NCPC events (240 participants)
- Neurological conditions policy group
- Web site [www.ncpc.org](http://www.ncpc.org)
- NCPC journals and neurological group publications

### 3. The pathway in practice: Pilot Sites

Six initial pilot sites: neurology, rehabilitation, palliative care, Sue Ryder neurological centre, x2 MND Association care centres

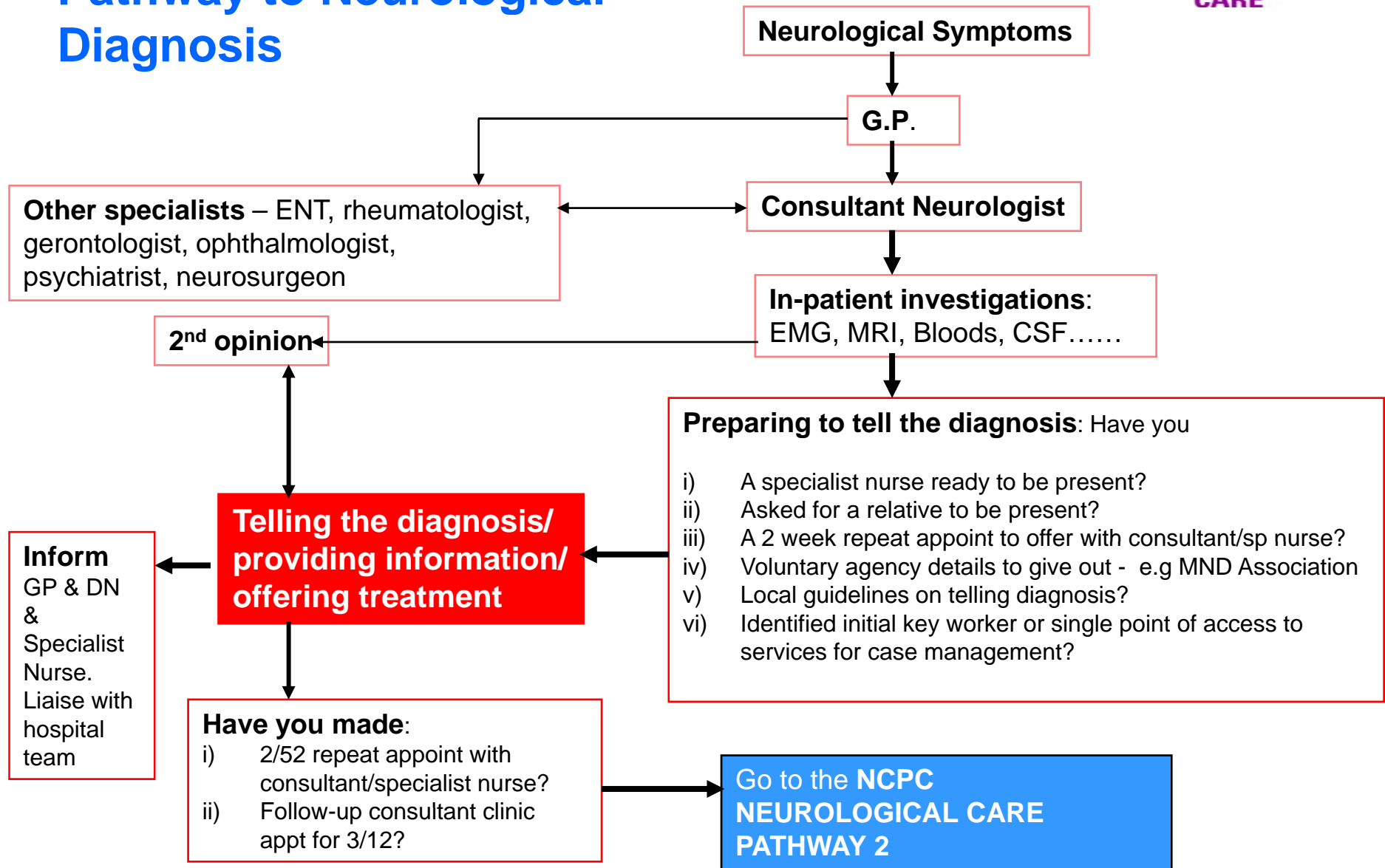
#### Initial findings:

- supportive tool for practice, comprehensive
- pathway template detailed but adjustable for local use
- promoting of inter-professional practice and communication
- useful for triggering referrals and forward care planning
- reduces risk of patients slipping through the referral net
- supportive tool for education of health and social care professionals



# Pathway 1

## Pathway to Neurological Diagnosis



# Considerations

- Neurological conditions vary in presentation but often there are parallels with symptoms and need for services
- It is very difficult to make some diagnoses: may require a time period for further observation, may require a second opinion
- In these pathways we are talking about ideals, recognising that local services may be limited in what can be offered

# Structure of Pathway Two

**Part 1**      Early action considerations

**Part 2**      Neurological Care Pathway

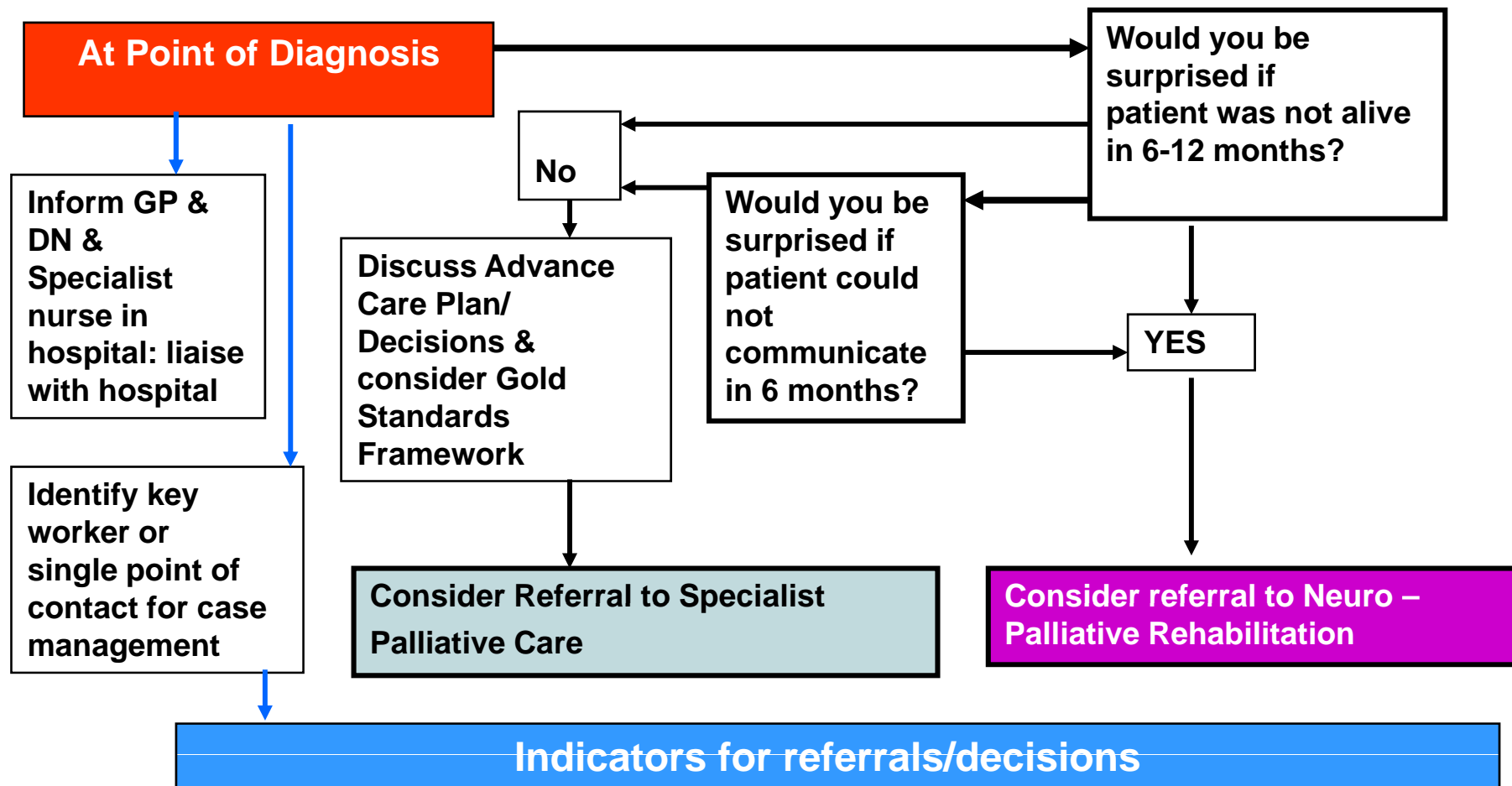
\*Indicators for Referral

\*\*Attention to Policy

Neurological care pathway

# Pathway 2

## Part 1: At Diagnosis - Early Action Considerations



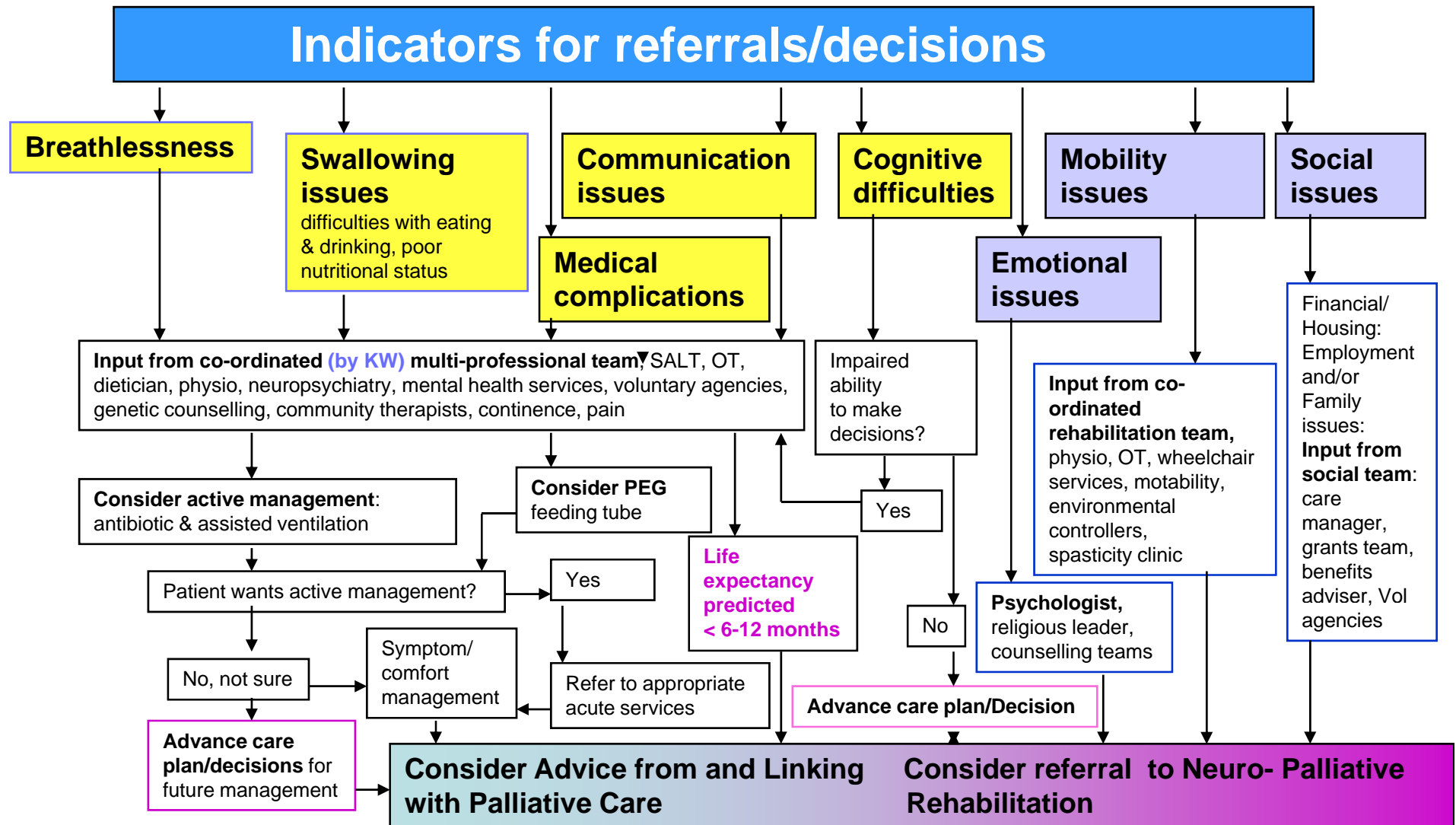
# What is neuro-palliative rehabilitation?

Holistic, patient centred approach to the care of neurological patients with significant disability, complex needs and a potentially shortened life span.

Includes diagnosis of clinical problems, rehabilitation to maintain function, care coordination and appropriate palliation to relieve symptoms.

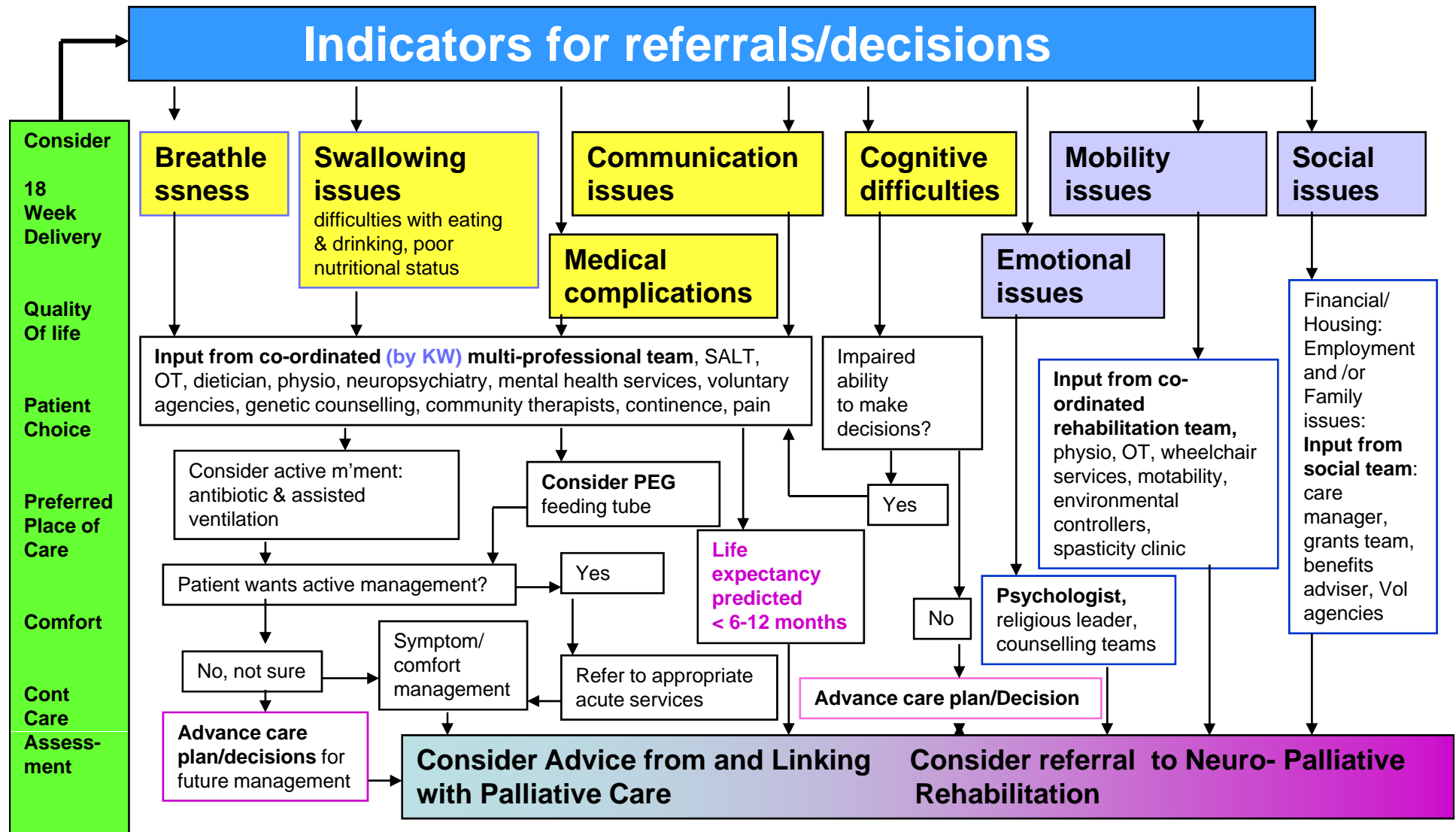
# Pathway 2

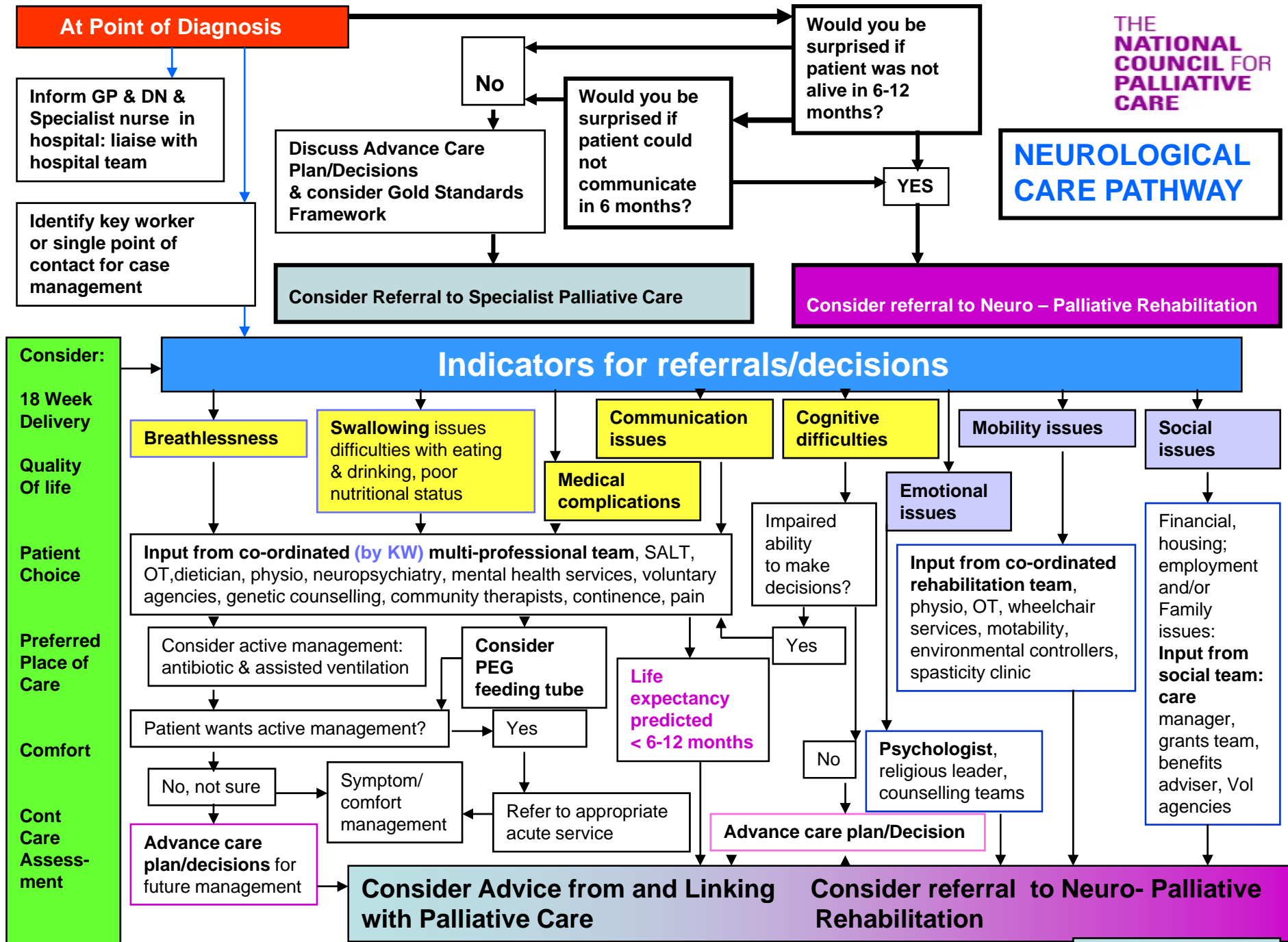
## Part 2\* Indicators for referral



# Pathway 2

## Part 2\*\* Indicators for referral & attention to policy





# Conclusions

## **The Pathway**

A national template for neurological care

## **Initial Pilot Work**

Supportive of the value of the pathway for achieving its aims

## **NCPC Specialist nurse survey**

83% useful for their practice

## **Dissemination**

Conferences: International and European

Pathway published and accessible for use and/or local adaptation

NCPC [2007] Focus on Neurology

website [www.ncpc.org.uk](http://www.ncpc.org.uk)

## **The Future**

Assess its impact on care of people with neurological conditions

# A Pathway to Encourage Partnership Working

Dr Janice Brown  
University of Southampton

Partnership team: Lucy Sutton, National Policy Lead,  
NCPC Neurological Conditions Policy Group,  
UK MND Professional Network,  
Consultation participants,  
Pilot site participants.