

THE
NATIONAL
COUNCIL FOR
PALLIATIVE
CARE



Neurological Conditions
Policy Group

Neurological Integrated Care
Pathway

‘Second Consultation’

Janice Brown
9 February 2007



Remit of the working group

- **Develop a neurological integrated care pathway – promote effective, seamless care**
- **Resource for professionals – people with neurological conditions who enter the palliative phase**
- **NCPC Neurological Policy working group members: Janice Brown, Lucy Sutton, Christina Mason, David Morton, Jan Smith,**
- **Acknowledgments: NCPC Neurological Policy group, Delegates at first consultation process (Sept 2006), UK MND Professional network, Rachael Burman and colleagues**



Today's presentation

- Our aims for the ICP
- **Original diagrammatic pathway work (v1)**
- **Changes recommended from first consultation**
- **Revised diagrammatic pathway work (v2)**
- **Invite consultation for the on-going development/practice pilot of the ICP**



Our Aims for the NCPC Pathway

1. **Template for 'ideal' care – promote key worker concept**
2. Recognise the need for local variations
3. **Keep the patient/family at the centre of care decisions**
4. For use by professionals
5. **Involve all component parts of the patient's journey (pre-diagnosis to palliative care)**
6. Support the proactive interface between pivotal services e.g. neurology, palliative care, rehabilitation – **neuro-palliative rehabilitation**, voluntary agencies, social care
7. **Wide spread consultation & pilot in practice**



Structure of the NCPC Neurological Integrated Care Pathway (ICP v1)

A. Two pathway diagrams summarising

- 1) Pathway to Diagnosis
- 2) Pathway for Supporting People to Live with a Neurological condition (3 parts)

B. Supportive Tools

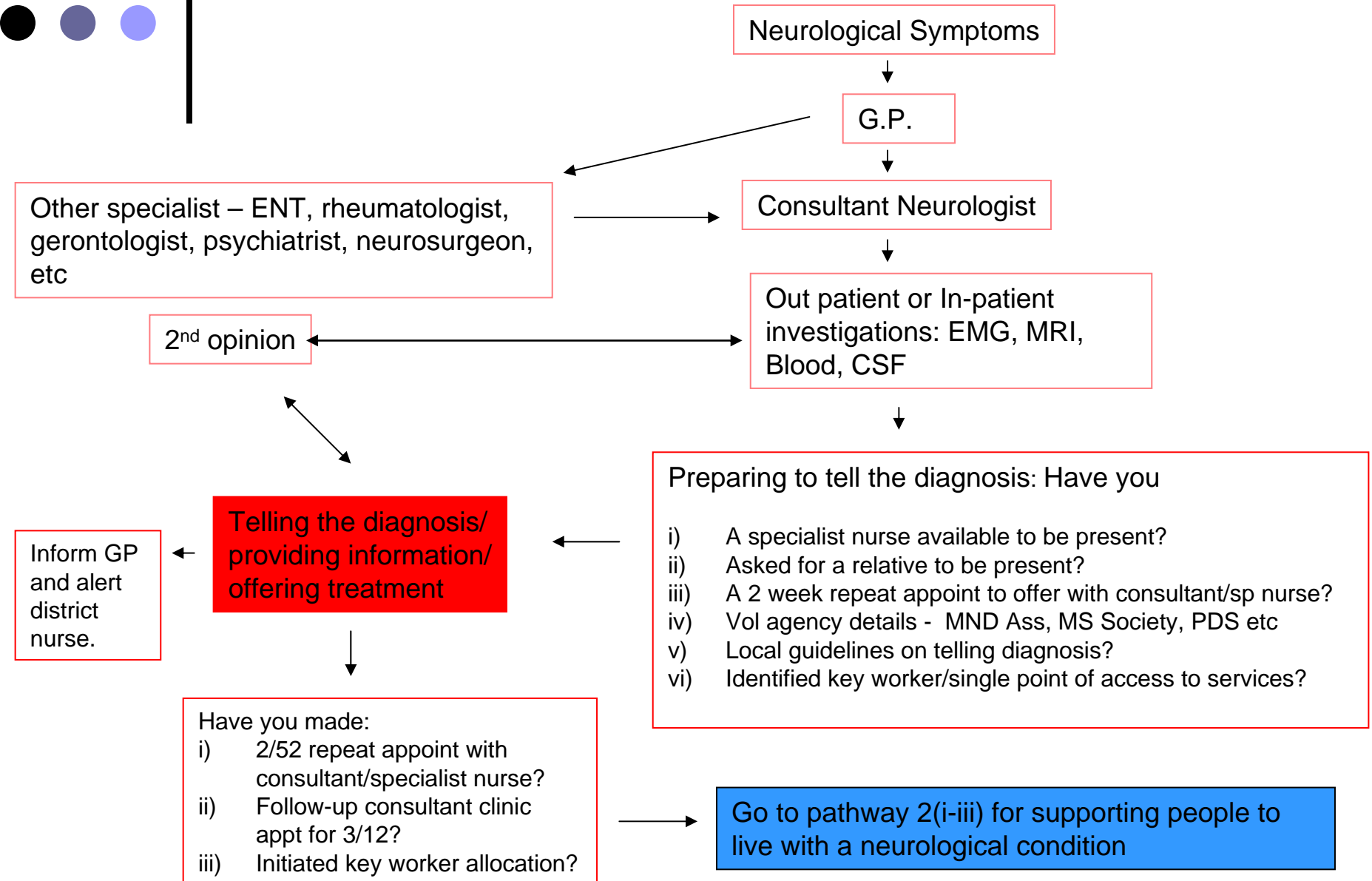
To capture the essential information for the care of people with neurological condition (s), their carers and their families –

- clarification of key worker role
- care plan documents

C. Evidence base

Wide range of evidence supporting the pathway

Pathway 1 – pathway to diagnosis v1





Pathway - Comments

- In these pathways we are talking about ideals, recognising that services may be limited in what can be offered
- **Neurological conditions vary in presentation but often there are parallels with symptoms and need for services**
- It is very difficult to make some diagnoses;
 - require a period of further observation
 - second opinion, may be required



Pathway 2 - Pathway for Supporting People to Live with a Neurological Condition v1

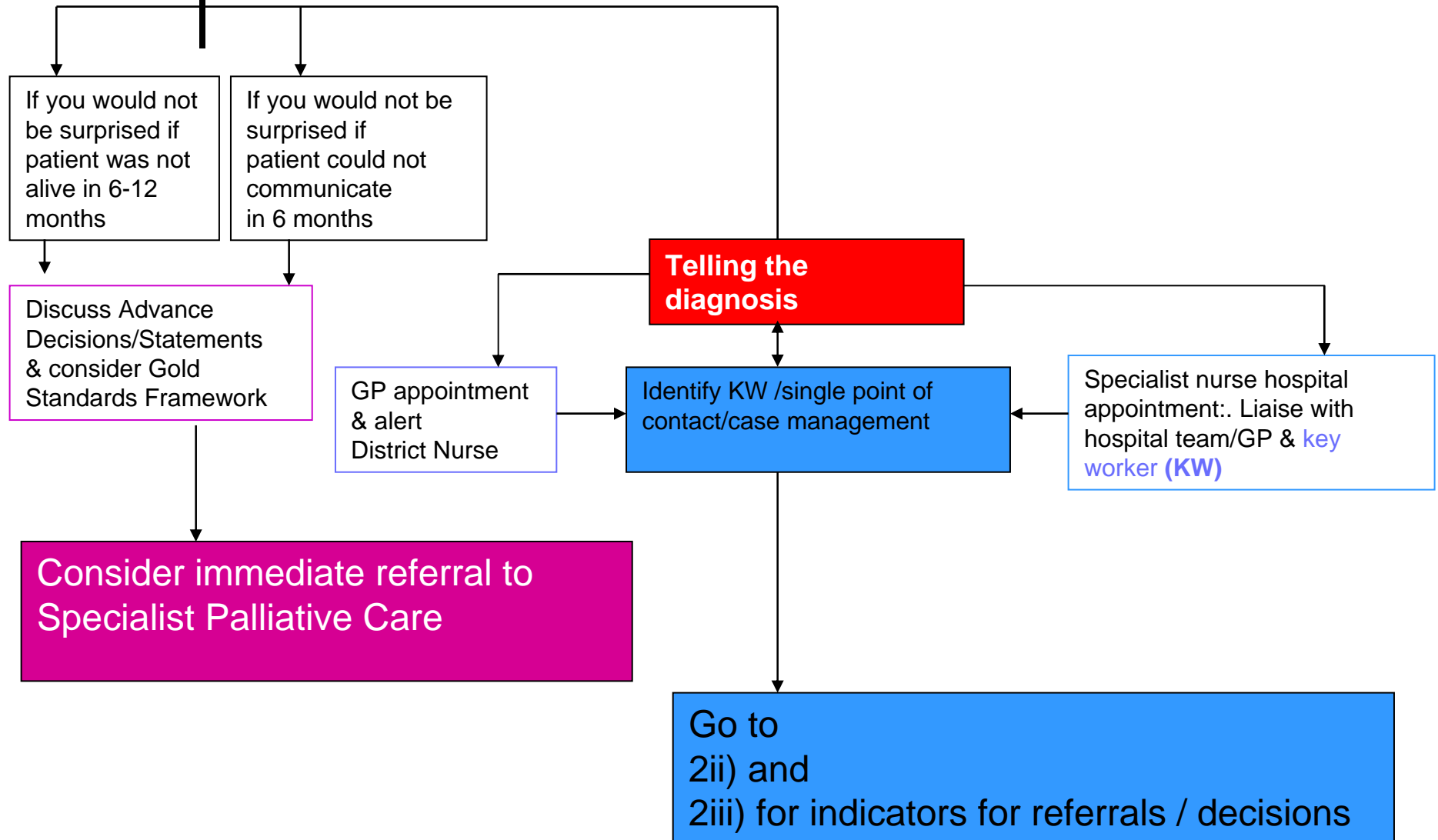
The Three Parts:

2i) Diagnosis and Early Specialist Palliative Care referral

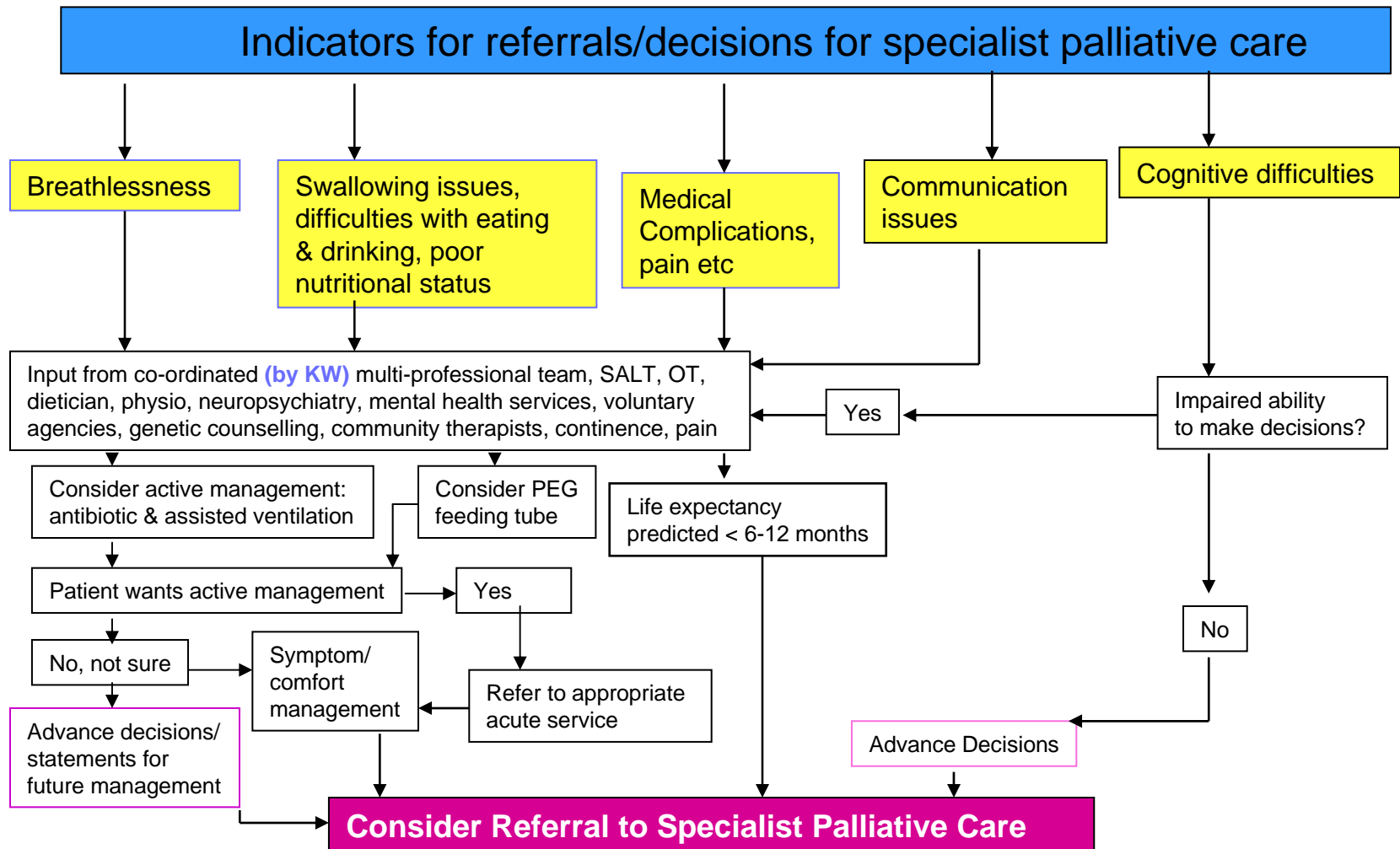
2ii) Indicators for Specialist Palliative Care referral

2iii) Indicators for Non-Palliative Care referral

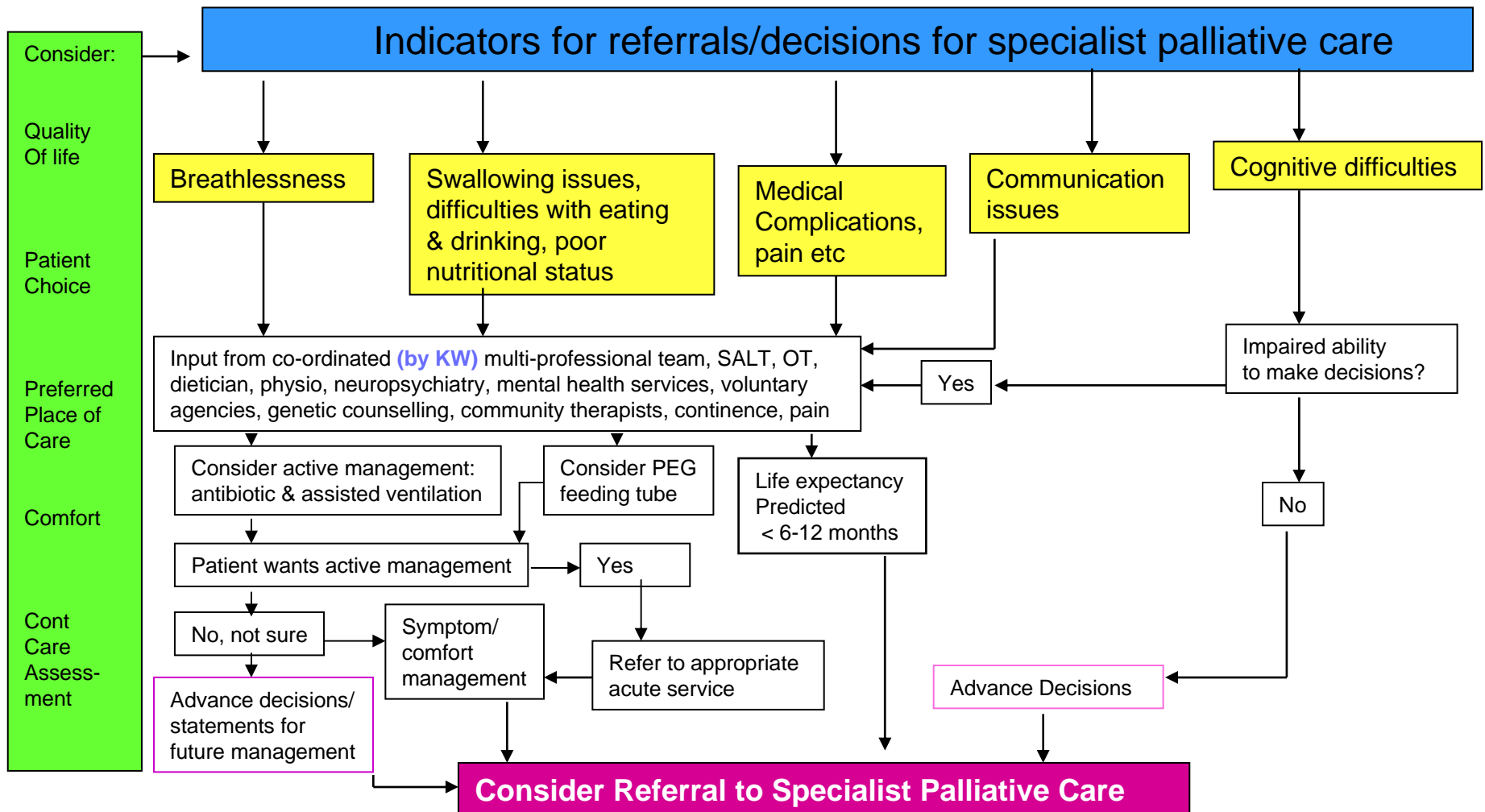
**PATHWAY 2i) Supporting people living with a neurological condition:
Diagnosis and Early Sp Palliative Care referral v1**



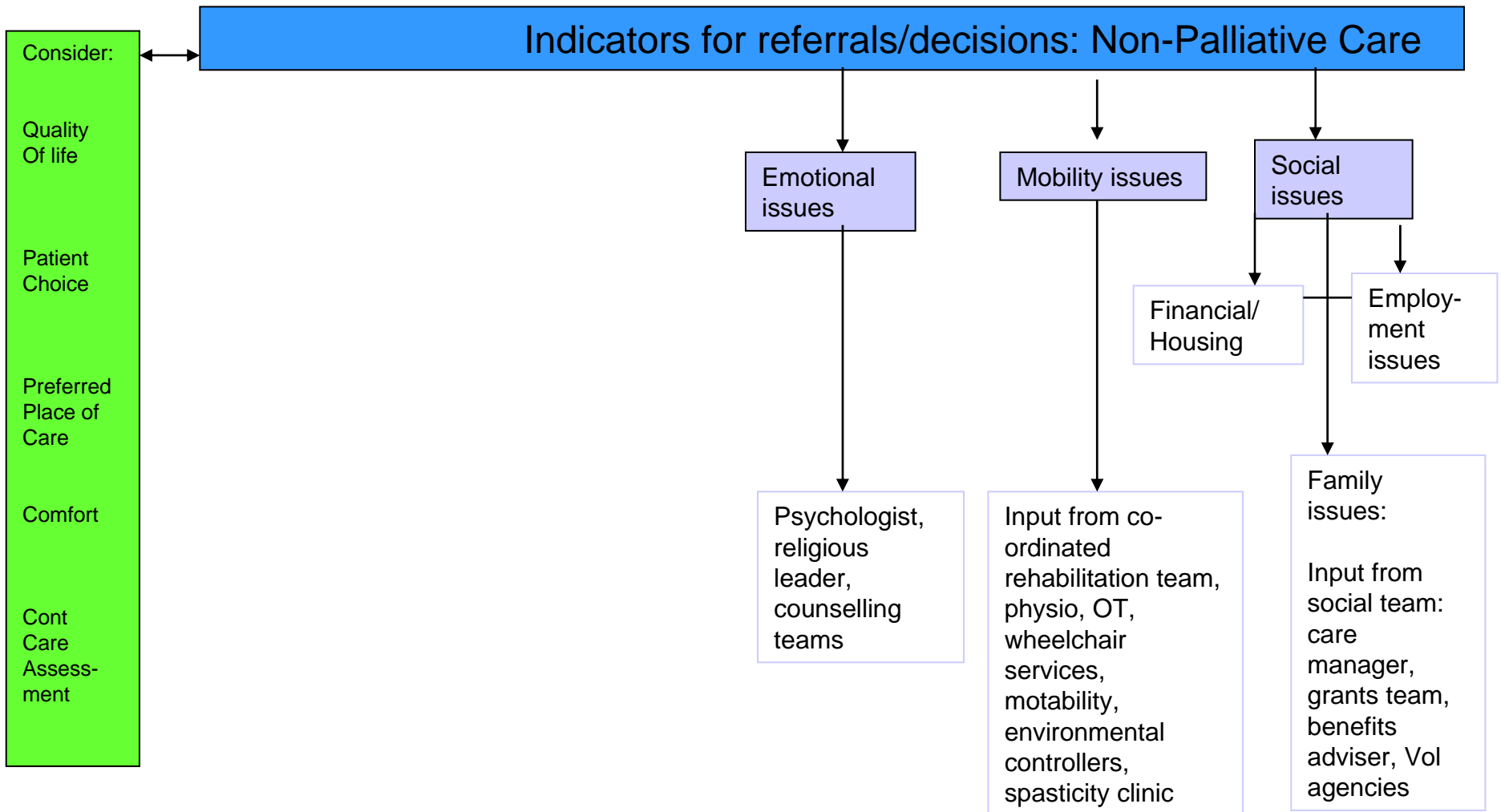
Pathway 2ii) Supporting people living with a neurological condition: Indicators for Specialist Palliative Care referral v1



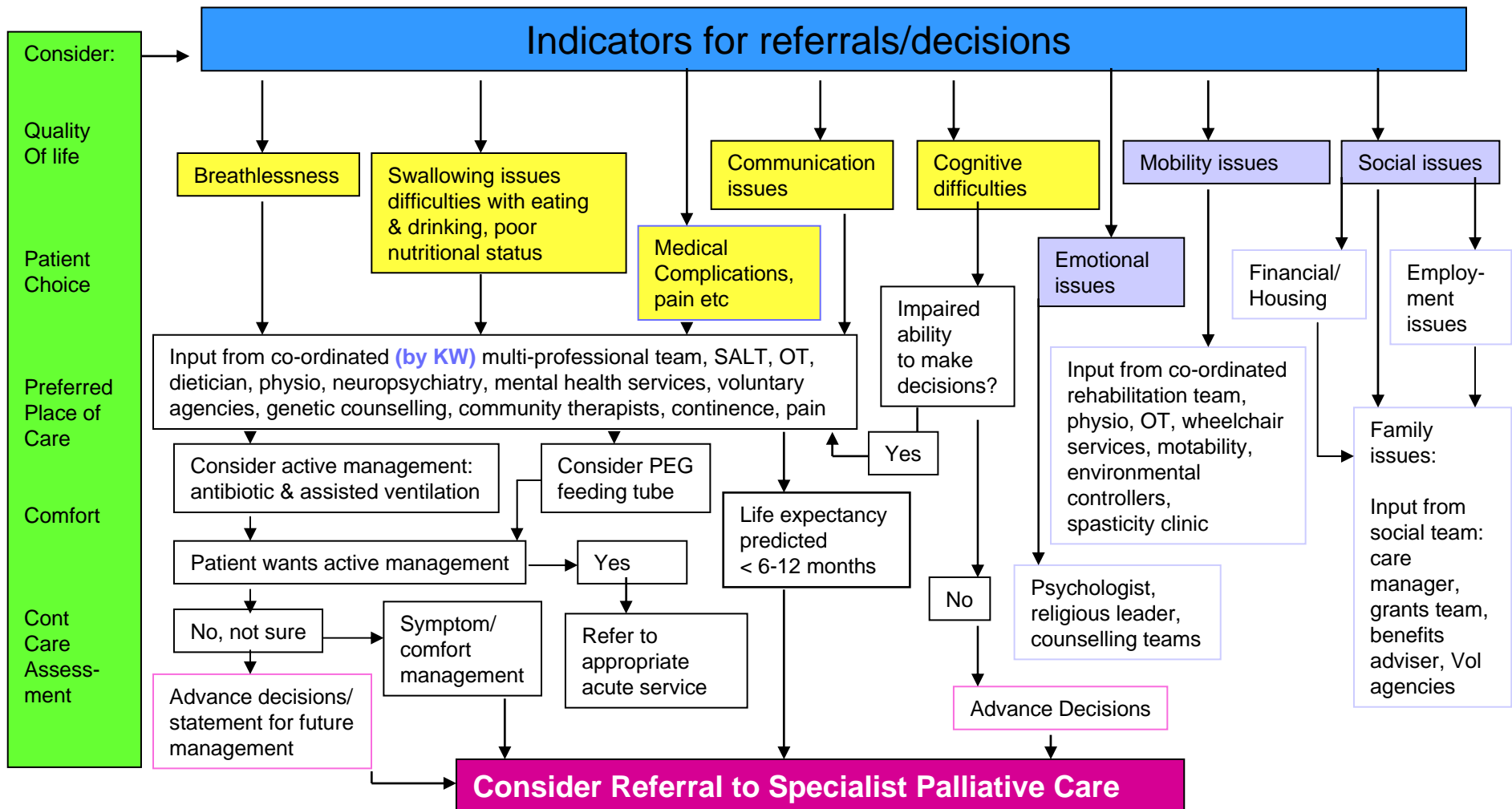
2ii) cont...Supporting people living with a neurological condition: Indicators for Specialist Palliative Care referral v1



2iii) Supporting people living with a neurological condition: Indicators for Non-palliative Care referral v1



2ii) & 2iii) Supporting people living with a neurological condition Indicators for SPC & Non- PC referral v1

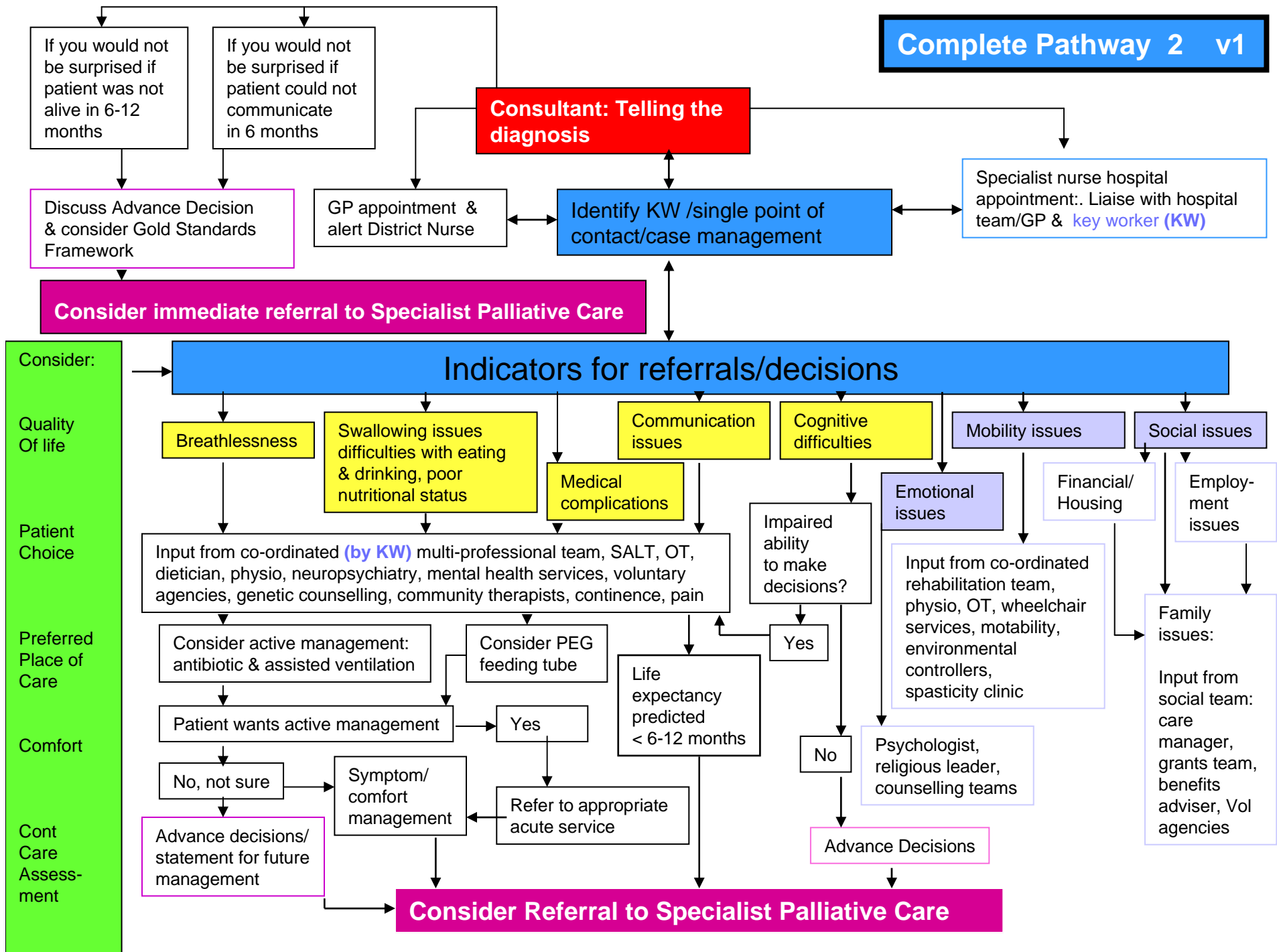




The Complete Pathway (v1)

Putting 2i, ii and iii together!

Complete Pathway 2 v1

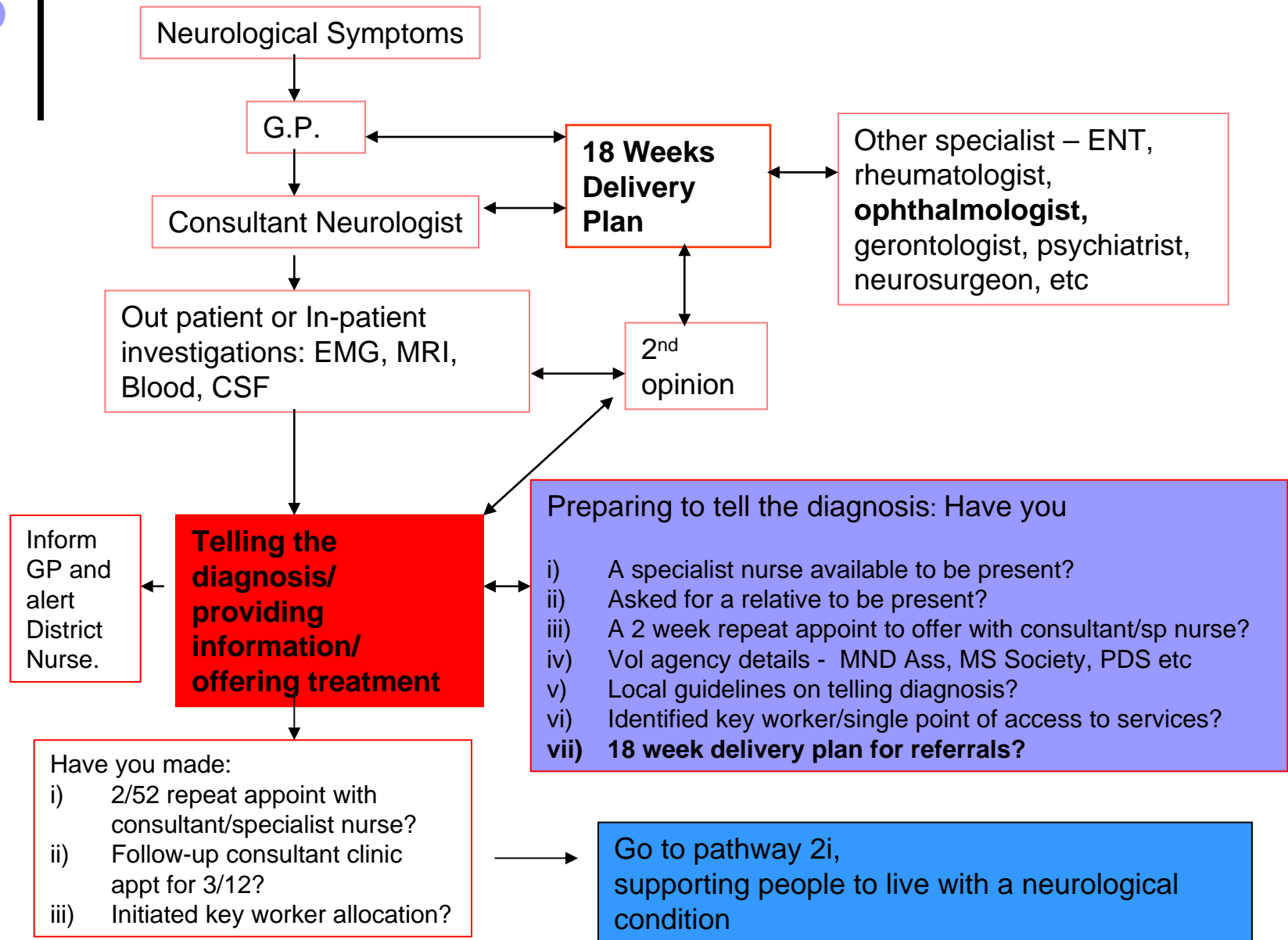




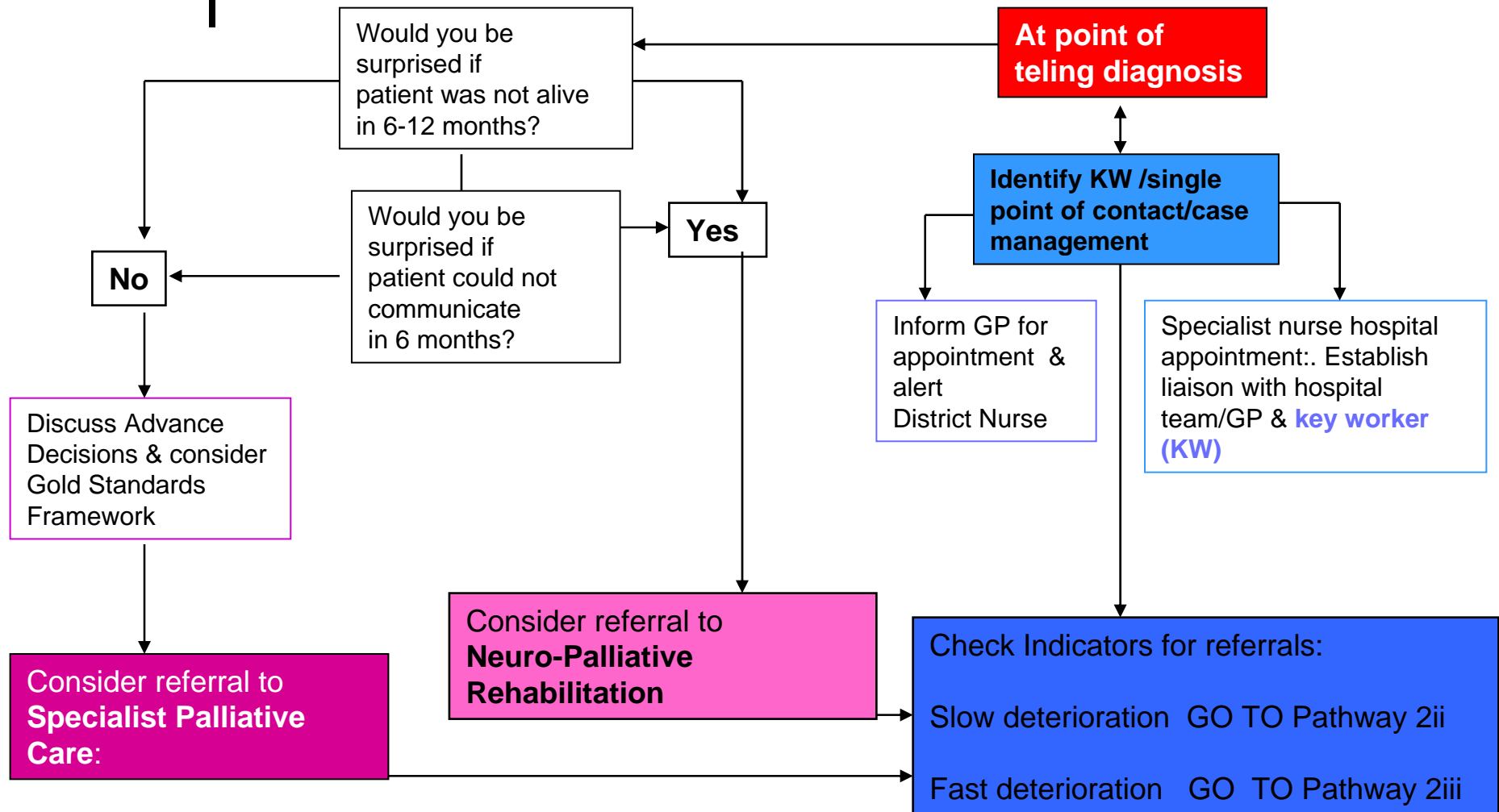
Main Changes recommended from first consultation

- 1. Policy: 18 week delivery programme
(referral to treatment)**
2. Pace of deterioration: Slow and Fast
- 3. Concept: Neuro-Palliative Rehabilitation**

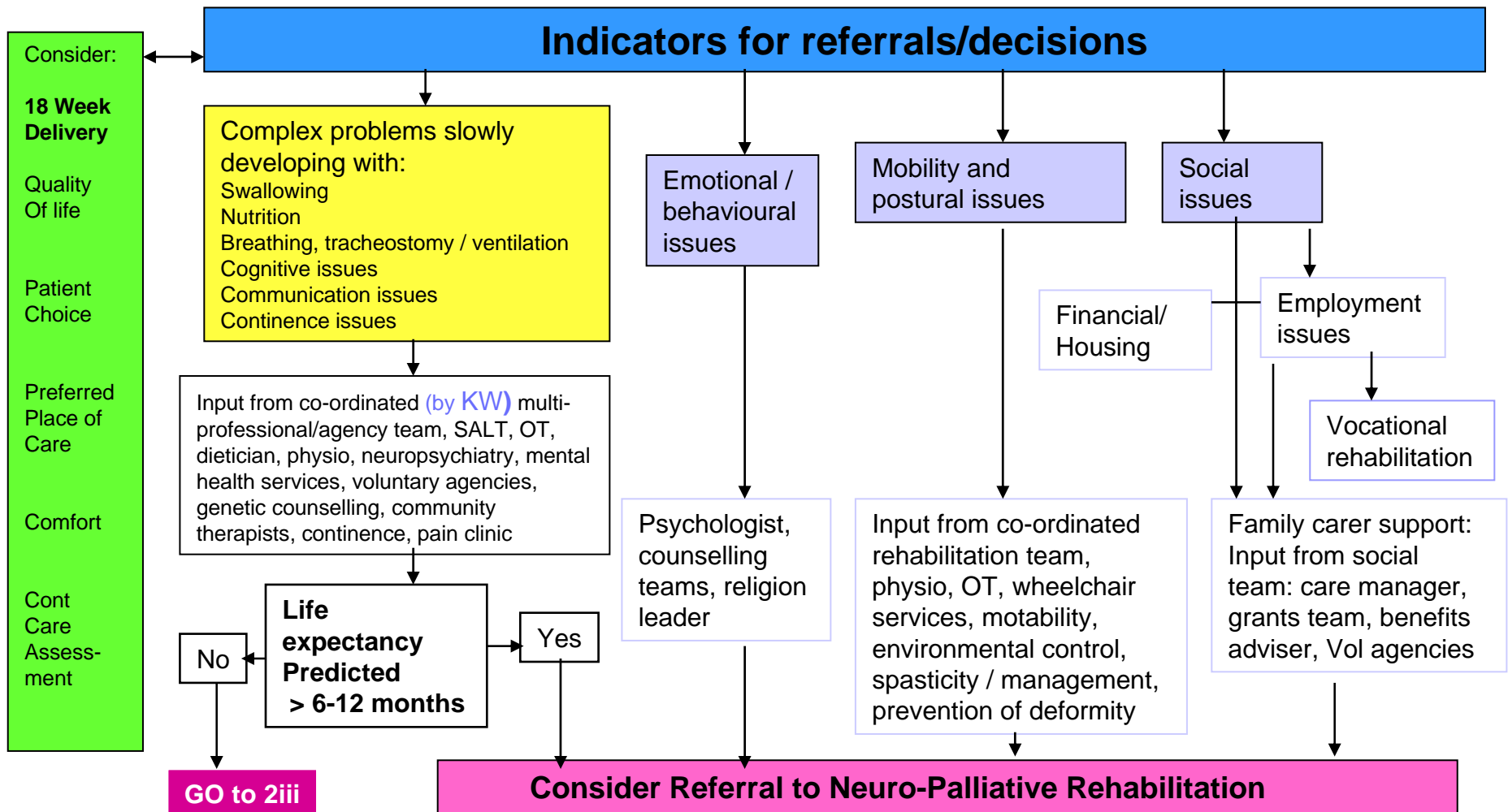
Pathway 1 – pathway to diagnosis v2



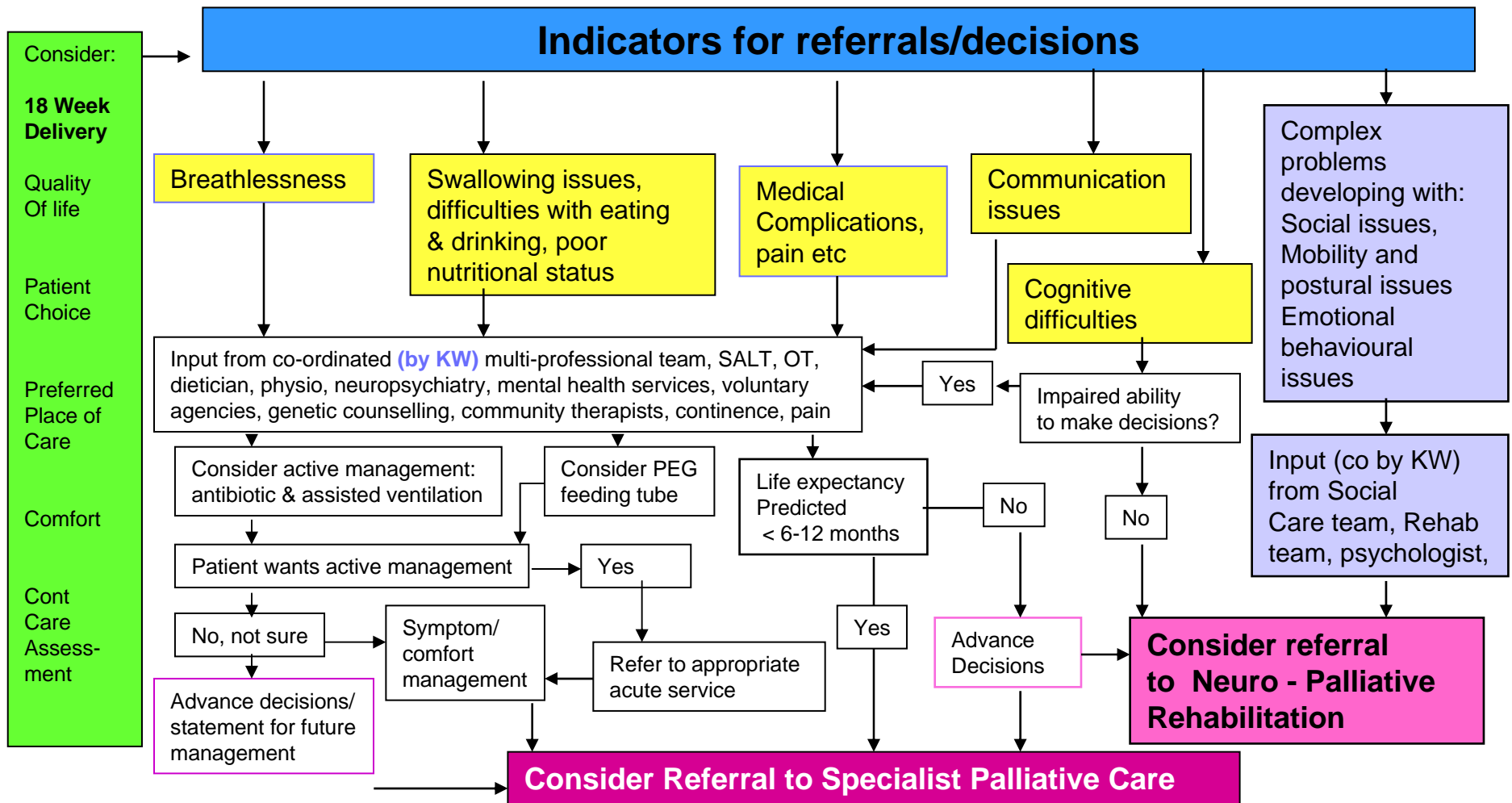
PATHWAY 2i) Supporting people living with a neurological condition: At Diagnosis and Early Action Considerations v2



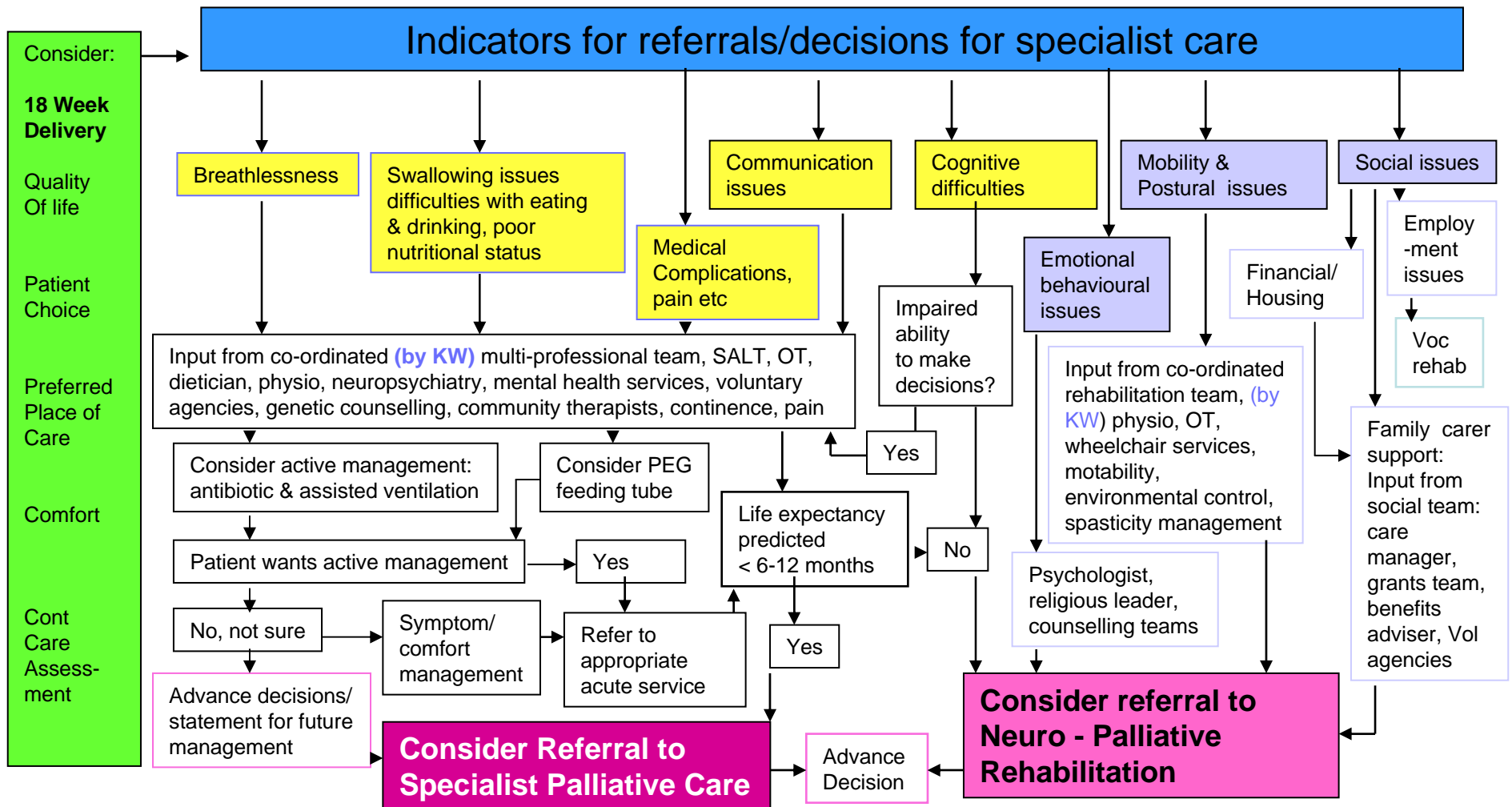
PATHWAY 2ii) Supporting people living with a SLOW Deteriorating Neurological Condition: indicators for specialist neuro-palliative rehabilitation referral v2



PATHWAY 2iii) Supporting people living with a FAST Deteriorating Neurological Condition: indicators for specialist referral v2



PATHWAY 2iv) Supporting people living with a VARIABLE TIMING Neurological Deterioration: indicators for referral for specialist care (2ii and 2iii combined, v2)



The complete pathway v2

Merging

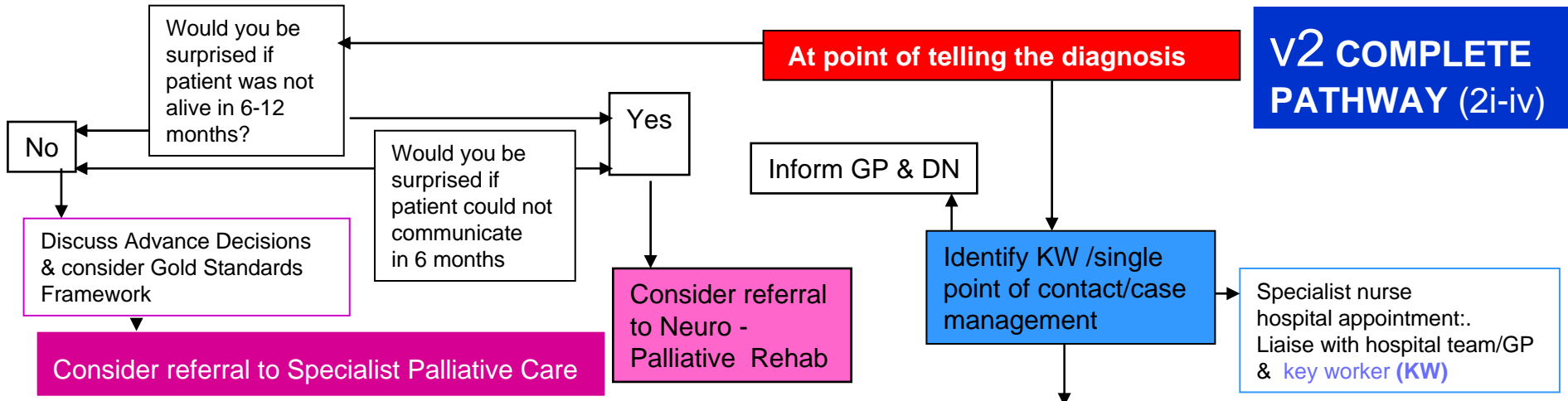
At Diagnosis Pathway (2i)

with

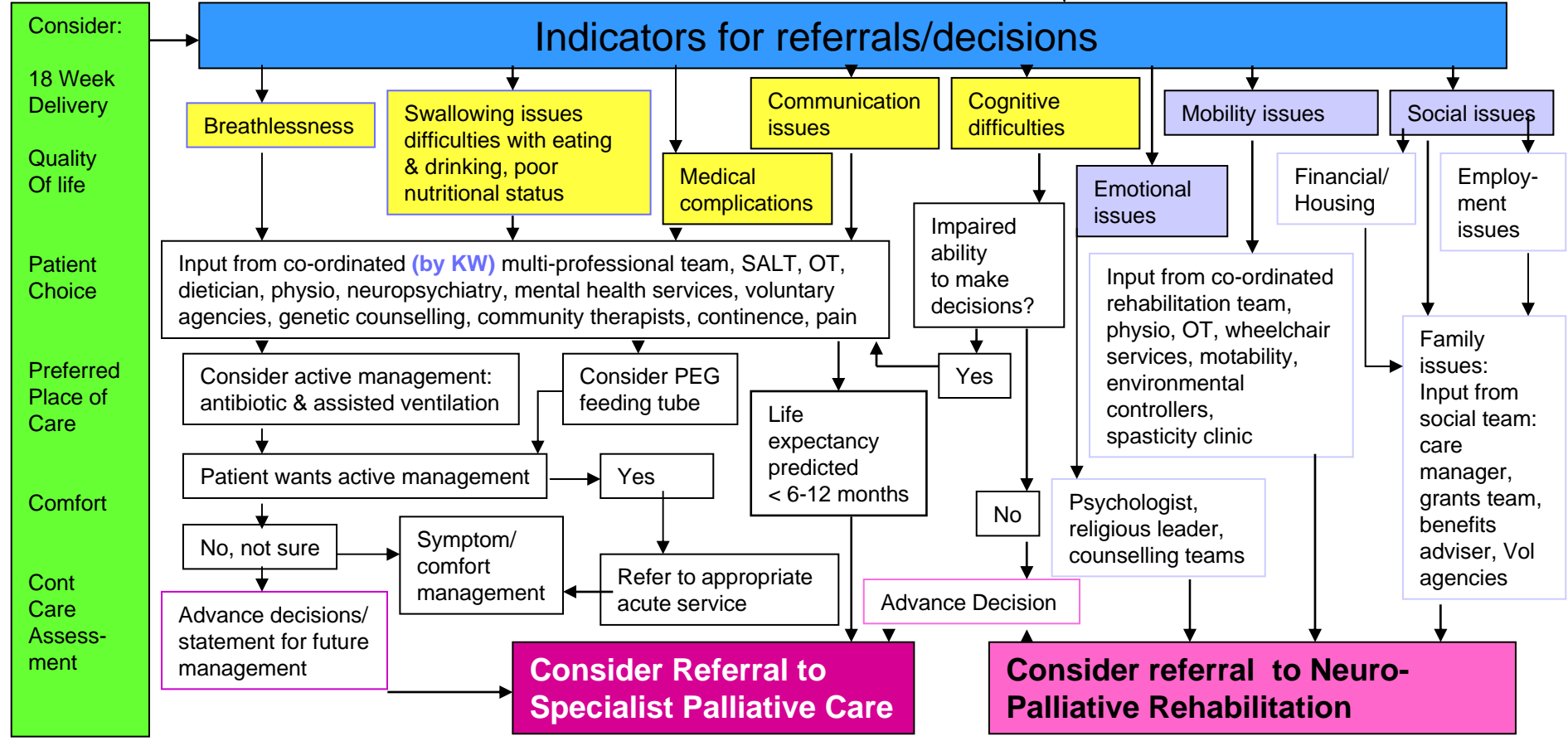
Variable Timing Pathway (2iv)

V2 COMPLETE PATHWAY (2i-iv)

At point of telling the diagnosis



Indicators for referrals/decisions



We welcome

- Your views
- **What you consider are the relative strengths of the v1 and v2 pathways? (comment sheets in your packs; view posters)**
- What you consider needs further development?
- **What would you want to see in the supportive documentation?**



NEXT STEPS.....

Consultation

- Complete the question sheet found in your pack and leave these on your table
- For supporting docs visit www.ncpc.org.uk
- Forward ICPs to anyone else you feel should be involved in the consultation
- To send further feedback or comments please email l.sutton@ncpc.org.uk

Pilot sites

- Let us know if you would like to be involved in piloting the pathway, [please indicate on your question sheet](#)

THE
NATIONAL
COUNCIL FOR
PALLIATIVE
CARE



Neurological Conditions
Policy Group

THANK YOU

**Neurological Integrated Care
Pathway**

‘Second consultation’

Janice Brown
9 February 2007